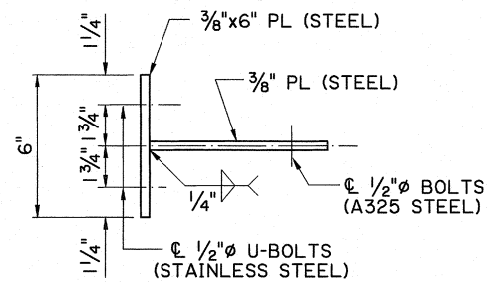
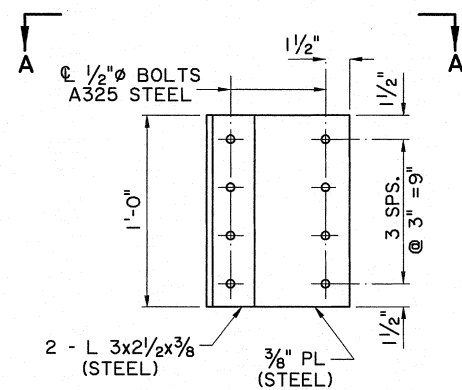


SIGN SUPPORT DETAIL

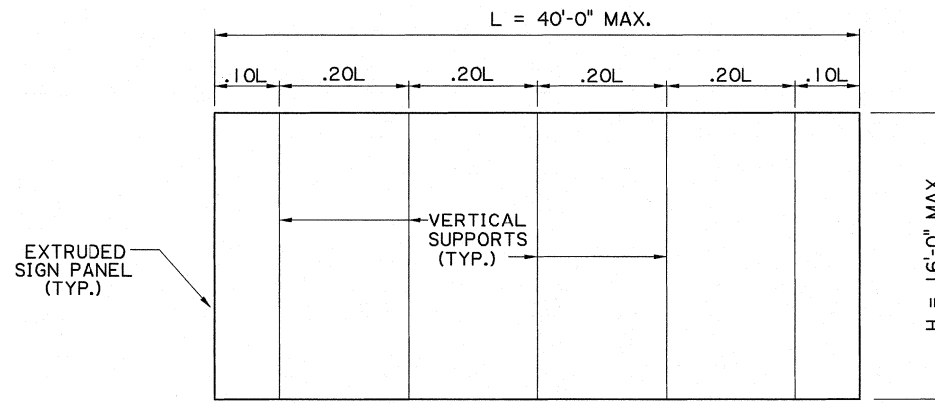


ALT. SECTION A-A

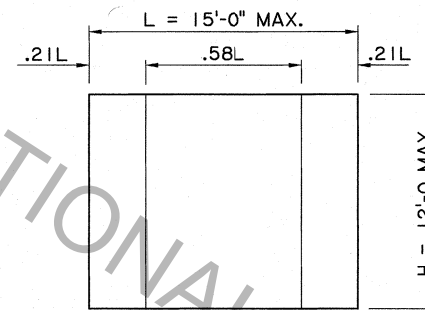


BRACKET DETAILS

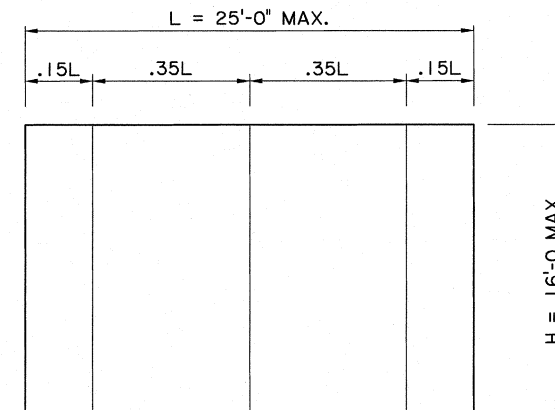
NOTE: ALL STRUCTURAL STEEL SHALL BE GALVANIZED



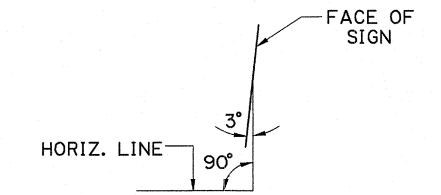
5 SUPPORTS



2 SUPPORTS



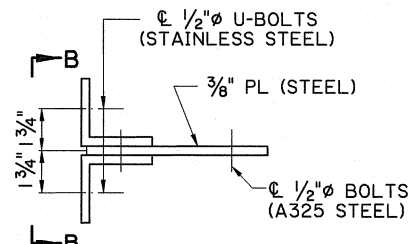
3 SUPPORTS



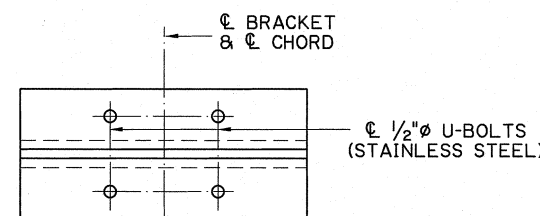
FINAL SIGN PANEL ORIENTATION

SPACING OF VERTICAL SUPPORTS FOR OVERHEAD SIGN AND FASCIA SIGN INSTALLATIONS

FOR INFORMATIONAL PURPOSES ONLY



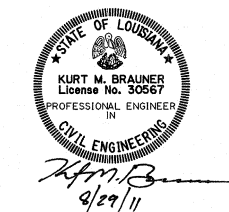
SECTION A-A



SECTION B-B

NOTES:

- VERTICAL SUPPORTS FOR OVERHEAD SIGNS SHALL BE 4x3x3/8 ALUMINUM ANGLE. TWO (2) ANGLES ARE REQUIRED FOR EACH VERTICAL SUPPORT.
- FOR NEW OVERHEAD SIGN PANELS (INCLUDING FASCIA MOUNTED) INCORPORATING EXISTING STRUCTURE SUPPORTS (SIGN TRUSS, SIGN CANTILEVER, AND FASCIA), THE CONTRACTOR WILL PLACE NEW VERTICAL SUPPORT ANGLES WITHOUT SPLICES THAT EXTEND THE FULL HEIGHT OF THE PRIMARY SIGN PANEL. THESE SUPPORTS AND ALL OTHER MATERIALS REQUIRED TO CONNECT TO AN EXISTING MOUNT SHALL BE INCLUDED IN THE COST OF THE SIGN PANEL.



SHEET NUMBER	
DESIGNED	K. BRAUNER
CHECKED	P. FOSSIER
DETAILER	I. KOURILOVA
CHECKED	K. BRAUNER
DATE	JAN. 2011
SHEET	2 OF 16
PARISH	
FEDERAL PROJECT	
STATE PROJECT	
REVISION DESCRIPTION	
NO.	
DATE	
BY	
SIGN PANEL DETAILS	
BD.2.7.1.0.2 - OVERHEAD TRAFFIC SIGNS	
BRIDGE AND STRUCTURAL DESIGN	